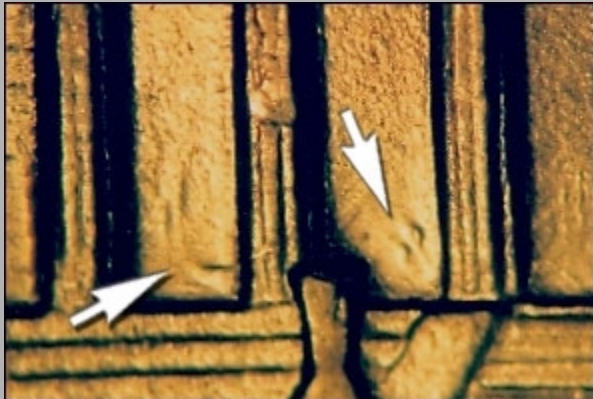


# 1994 1c CDDR-001

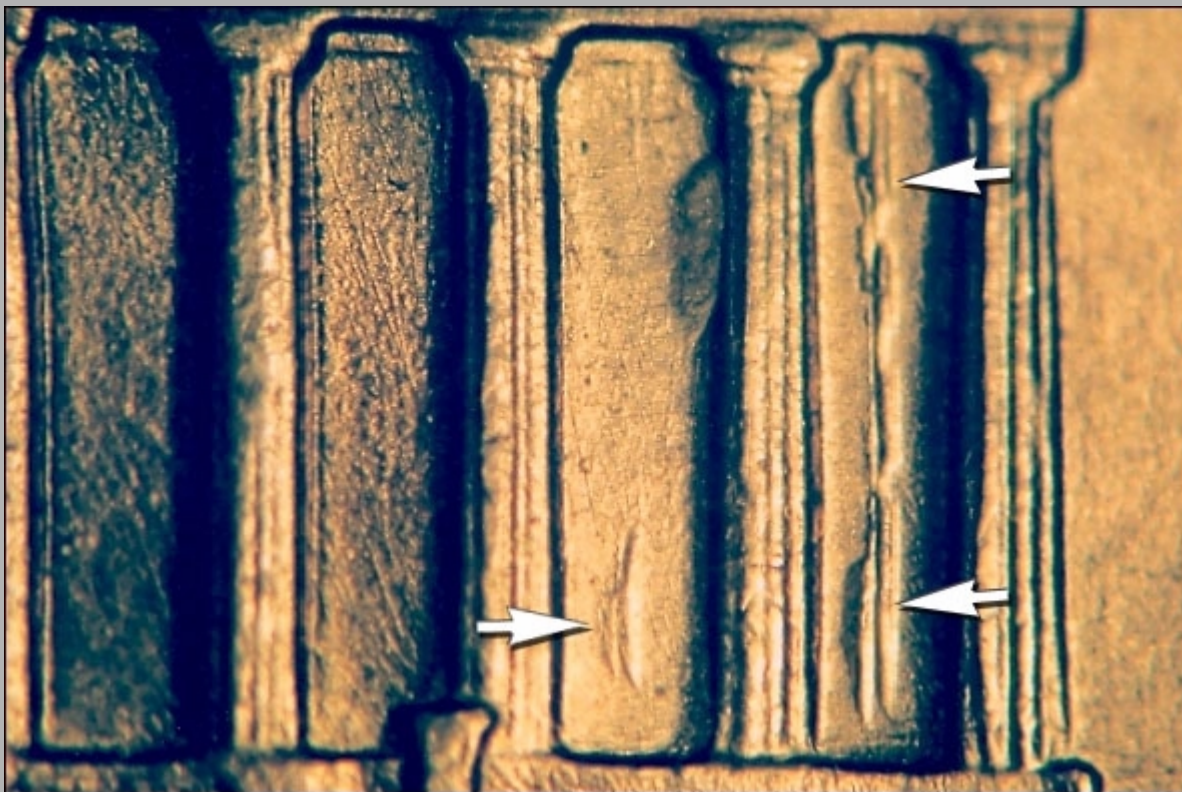
## Photo File Card



*Doubling remnants in bays #2 and #3.*



*Die scratches extend through the date.*



*This variety exhibits bold extra column remnants within the 10th and 11th Memorial bays.*

## Description File Card

**Classification:** *Class IV Offset Hub Doubling*

**References:** CONECA DDR-001/1-R-IV; Wexler WDDR-001; Coppercoins 1994P-1DR-001; CPG FS-01-1994-801

**Doubling:** Exhibits prominent column remnants within the 10th and 11th Memorial bays. Additional remnants are visible within the lower 2nd and 3rd bays.

**Rarity:** URS-8

**Interest Factor:** IF-2

**Value:** MS63 - \$125; MS65 - \$250

**Reported by:** James Mattaliano

## Diagnostics File Card

**Obverse:** (1) Numerous die scratches extend through the date area.

**Reverse:** (1) Raised polished area located within the upper right 10th Memorial bay that can be seen in the bottom photo.

**Comments:** The first hubbing impression was extremely offset to the northeast. Above specimen was retrieved from pocket change.